

SPECIFICATIONS – JULY 2010

SFMTA ENFORCEMENT MEN'S LONG VELOCITY BIKE SHORTS # 1051M ITEM 21

VENDOR: MOCEAN, Inc. Costa Mesa, CA., or acceptable like alternate.

COMPONENTS

The Men's Long Velocity Bike Short shell consist of a Supplex nylon front and a woven-stretch fabric rear. It is designed to be worn over a padded liner. The design can be modified by sewing-in the padded liner or adding back pockets. The padded liner is available as separate items. The modification(s) to add back pockets or sew-in padded liner are available options. Optional belt "keepers" are also available.

FABRICS

Front Shell Fabric:

Fabric: 100% Supplex® Nylon
Warp: 70 denier textured 34-filament nylon
Fill: 2-ply 70 denier 34 filament nylon
Construction: 160 x 72 Plain Weave
Finish: Piece Dyed/ with Teflon® durable water-repellant (DWR) treatment

Rear Shell Fabric:

Fabric: X-FAXTOR™ 65% Aramid/30% Cotton/5% Spandex
Warp: 86 denier textured Aramid/Spandex
Fill: 105 denier Aramid/Spandex
Construction: 50 x 61 Plain Weave
Finish: Piece Dyed/DWR

(Optional) Pocketing:

Fabric: 50% Polyester/50% Cotton
Warp: 35 x 35 yarn size/78% Cotton
Fill: 70 denier 34-filament polyester
Construction: Plain Weave
Finish: Piece Dyed/Starch

MEN'S LONG VELOCITY BIKE SHORT

COLOR

The shell fabric shall be available in the following color: Police Navy

The color may also be available in other established shades as set forth and agreed upon in approved specifications.

The construction and top stitch thread shall match the color of the shell fabric.

The zipper(s), hook and loop and (optional) pocketing fabric shall be black.

MEASUREMENTS

All measurements are from a relaxed state, not stretched.

STYLE

MOCEAN Style #1051M "Men's Long Velocity Bike Short" with 8-inch inseam., or acceptable like alternate.

FRONT

The front shall consist of an inner front panel and a side front panel to form a vertical body and pocket seam. The front shall have a zipper fly and a shirred waistband. The waistband shall not open at the top of the zipper fly. The front rise shall be a minimum of 11-inches and the hips shall measure 24-inches each.

FLY

The zipper fly shall be of a French Fly design. The left fly facing shall be made with the same fabric as the front shell and double needle top stitched to the front shell to form a 90° curve toward the center front rise to 1-inch below the end of the fly zipper. The right fly shall be lined with the same fabric as the front shell. The right fly lining shall be sewn to the right fly zipper in a neat and durable matter and bar backed to the center front seam and to the left fly top stitching above the curve. The fly zipper shall be caught in the waistband turn back along with the left fly facing and right fly lining.

WAISTBAND

The waistband shall be shirred and finish clean on the inside. The waistband shall finish 1 ¾-inches wide and feature elastic that is enclosed in the waistband and shirred in a three stitch, multi-needle chain stitch operation. The shirred gathers shall appear in a uniform and equidistant fashion. There shall be an internal draw cord that circles the waistband in a tunnel between the top and middle multi-needle topstitches and exits through two, ½-inch button holes set to 1 to 2-inches apart and equidistant from the center front seam. The draw cord shall measure 1/8-inches in diameter and no less than 55-inches in length and may or may not be knotted at the ends.

POCKETS

The side front panel, the slash pocket, the patch pocket and the pen pockets shall be sewn together at the hem as a French Hem. The pockets shall be formed between the side front seam and the side seam and the hem topstitching.

SLASH POCKETS

There shall be 2-slash band pockets that are made from the front shell fabric. The slash pocket opening shall run from its highest point in the center body and pocket seam to its lowest point in the side seam. The highest opening of the slash pocket shall be no more than 14-inches above the lee eye hem and the lowest opening shall be no more than 9 ½-inches above the same hem. The top of the slash pocket opening shall be finished clean with double needle top stitch and the pocket width shall remain constant at 6-inches. The bottom of the slash pocket shall be made with the face of the outer front panel fabric. The pocket bag shall run from the slash pocket opening down to the hem topstitching.

PATCH POCKETS

There shall be 2 patch pockets made from the front shell fabric. The patch pocket and opening shall measure 6-inches across and shall be finished clean with double needle top stitch. There shall be 5/8-inch wide hook and loop closures under the patch pocket openings. The left patch pocket hook and loop shall measure no more than 2 ½-inches wide and be centered equidistant between the pocket side seams and no more than ¼-inch below the finished edge of the pocket opening. The right patch pocket hook and loop shall measure the distance of the pocket opening and be centered between the pocket opening no more than ¼-inch below the finished edge of the pocket opening. The bottom of the patch pocket shall be made with the face of the slash pocket fabric. The pocket bag shall run from the patch opening down to the hem topstitching.

PEN POCKET

There shall be a pen pocket located on the right patch pocket at the side seam. The pen pockets shall be made of front shell fabric. The pocket openings shall measure ¼-inch and began at no more than 2-inches down from the patch pocket opening. The pockets shall measure 2-inches wide and 4 ½-inches long. The pen pocket opening shall be top stitched ¼-inch gauge.

There shall be a single needle top stitch running the center length of each pen pocket, equally dividing it. The pockets shall be formed between the side seam and the finished edge of the pen pocket. The pocket bag shall run from the pocket opening down to the hem stitching.

BACK

The back panels shall be formed from 2-piece construction. There shall be an upper back panel and a backstretch panel. The bottom edge of the upper back panel shall end 4-inches down from the top edge of center-back waistband. The upper back panel shall curve down and forward from the center back seam and end no more than 2 ½-inches from the side at the back hem. The backstretch panel is shaped in an arch that begins at the center back and curves forward to its termination at the back hem. The back hem shall be turned-back 1-inch and single needle top stitched. The back shall be a minimum of 18 ½-inches.

BACK POCKET (Optional)

There shall be 2-back pockets with zipper openings that are covered with welt flaps. The back pocket openings shall be made with a zipper and begin 3 ½-inches below the finished edge of the waistband and 2-inches from the side seam. The zipper shall be concealed under welt flaps. The welt flaps shall be made of shell fabric and interlined with a non-woven, non-fused pellow and measure 6 ½-inches long and 1-inch wide. The flap edges shall be edge stitched 1/16-inch gauge. The pocket bags shall be made of pocketing fabric and measure 6-inches deep and 7-inches wide. The pocket bags may be closed and edge-stitched ¼-inch gauge or may be closed and surged with 5-thread over lock.

BELTLOOPS

There shall be five, 7/8-inch wide belt loops sewn and set equidistant from one another on the waistband with the center back rise being the point of origin. The belt loops shall be of the same fabric as the front shell fabric and folded with 4 top stitches that are set equidistant from edge to edge. The bottom of the belt loops shall be bar tacked in the bottom of the waistband and the top of the belt loops shall be turned back and bar tacked to the top of the waistband in order to "float" as the end user sits. The belt loops shall finish no less than 2 ½-inches in diameter and are designed to accept an inner belt to support a Sam Brown belt or other duty belts.

KEEPERS (Optional)

There shall be five "keepers" sewn and set equidistant from one another on the waistband with the center back waist being the point of origin. The keepers shall be made of black, 1-inch black, 1-inch polypropylene web and 1-inch hook and loop fasteners. The webbing shall be cut and fused with a hot knife. The bottom of the keepers shall be bar tacked to the bottom of the waistband and the top of the keepers shall be bar backed to the top of the waistband. The keepers shall measure 6-inches in length and are designed to support a nylon, Sam Brown belt.

ZIPPERS

The front fly zipper shall be YKK coil plastic tooth type size 4.5 or equivalent. The zipper shall have a single slider and locking pull. The zipper shall open from the top of the waistband down toward the crotch seam. The zipper shall measure 7-inches long and be closed at both ends.

(Optional): The back pocket zippers shall be YKK coil plastic tooth type size 2.5 or equivalent. The zipper shall have a single slider and a non-locking, tear drop pull. The tape shall measure 5/8-inch wide. The zipper shall be 6-inches long and be closed at both ends.

SEAMS AND STITCHING

All stitching shall be lock stick type 301. All exposed exterior seams shall be double needle topstitched. All stress points shall be bar tacked.

THREAD

All construction thread shall be minimum size Tex 30 or 50/2. All top stitch thread shall be minimum size Tex 40 or 30/2.

SIZES

The Men's Long Velocity Bike Short is available in: XS-5X.

LABELS

Manufacture label shall be sewn on the top of the left patch pocket. Size label, care instructions, manufacturer's identification and R/N # shall be sewn into the center of the inner back waistband sizes.

ADDITIONAL OPTIONS – SFMTA-ENFORCEMENT

1. (5) Velcro Waist keepers affixed to the waistband.
2. Chamois Pad: Optional

SPECIFICATIONS – JULY 2010

SFMTA ENFORCEMENT VELOCITY POLO SHIRT # 0353 ITEM 22

VENDOR: MOCEAN, Inc. Costa Mesa, CA., or acceptable like alternate.

COMPONENTS

The Velocity Polo Shirt shall consist of a micro-denier polyester knit-pique and is unlined. It is hip length and has long sleeves, an oversized chest and I designed t be worn over body armor and perspiration management liners. The perspiration management liners are available as separate items. The design may be modified by: adding reflective tape, departmental identification or sewing-on chest pockets or a shield keeper. The modifications are available options.

FABRIC

Shirt Shell Fabric:

Fabric:	100% Micro-Denier Polyester
Construction:	Double Knit, Mini-Pique
Yarns:	Face: Spun Yarn 36 singles Stitch: 70 denier micro-filament polyester
Width:	58/60 inch
Weight:	5.2 oz/yard ²
Finish:	Piece Dyed/Q-WICK

Cuff Inset Fabric:

Fabric:	88% Tactel®/12% Lycra®
Construction:	Knit Raschel
Yarns:	165 x 144
Width:	58/60 inch
Weight:	13.5 oz/linear yard
Finish:	Piece Dyed/Brushed face

VELOCITY (LONG SLEEVE) POLO SHIRT

COLOR

The shell fabric shall be available in the following color: Police Navy

The color may also be available in other established shades as set forth and agreed upon in approved specifications.

The construction and top stitch thread shall match the color of the shell fabric.

The buttons and binding tape shall match the color of the shell fabric.

The (optional) pockets shall match the color of the shell fabric.

MEASUREMENTS

All measurements are from a relaxed state, not stretched.

STYLE

MOCEAN Style #0353/S-99 "Velocity Polo-Long Sleeve". ., or acceptable like alternate.

The Velocity Polo Shirt features a two-button placket and set-in sleeves. It has placket and shoulder epaulets and long sleeves. The chest is over sized and the collar and cuffs are made from the shirt shell fabric. It has a split tail hem and it is unlined and uninsulated. The polo shirt is designed to be worn over body armor.

FRONT

The front shall be one-piece construction. The front shall have a center front placket with a two-button closure. The front placket shall house a microphone epaulet. The chest is over sized to accommodate body armor. The front length shall be a minimum of 30-inches long.

PLACKET

The placket assembly shall be in a French seam design and set in the boxed seam below the collar of the upper front. Both left and right placket shall be made of the same fabric as the shirt shell and be fused with a non-woven material during its sub-assembly. The left placket shall be faced and the right and front placket shall be lined. The left front placket facing shall be sewn into the box seam in a neat and durable matter. The right front placket lining shall be sewn into the box seam in a neat and durable matter. The left and right front placket shall be stitched, turned and topstitched 1/16-inch gauge to the front shell. The bottom edge of the placket shall form a sharp, 90 turn along the bottom of the box seam and stitched, turned and topstitched 1/16-inch gauge.

COLLAR

The collar and the collar lining shall be made from the shirt shell fabric and shall be fused with a non-woven material during its sub-assembly. The front of the collar shall finish ¼-inches from the vertical edge of the front placket. The collar edges shall measure 3-inches wide at the center front and 3-inches wide at the center back. The collar top shall be edge-stitched ¼-inch gauge and shall be 17 ½-inches across the top. The collar and body seam shall be finished with bias cut binding tape. The binding tape shall be made with the shirt shell fabric. The binding shall be set via a mechanical folder and top stitched 1/16-inch. The ends of the binding tape shall be sewn into the front placket and box seam. The exterior of the collar and body seam shall be top stitched ¼-inch gauge.

BACK

The back shall be one-piece construction. It shall measure a minimum of 31 ½-inches long from the center collar seam to the bottom of the hem . The back shall have a dropped hem tail.

SLEEVES

The sleeves shall have set-in shoulders and be one-piece construction. The sleeve shall measure 11-inches wide at the shoulder seam and measure 36-inches long from the center back collar to the end of the cuff opening. The cuff opening shall measure 4 ¼-inches wide and is made from the shirt shell fabric. The cuff shall be folded in half and sewn to the sleeve with 3-thread over lock. The sleeve shall be closed with 5-thread over lock and single needle top stitched ¼-inch gauge around the cuff.

CUFF

The cuff is a two piece design. There is a cuff piece and an inset piece. The cuff piece shall be made of shirt shell fabric and the inset piece shall be made from cuff inset fabric. The cuff inset shall be surged and sewn to the cuff piece with 3-thread over lock and finish clean of the face. The cuff shall be folded in half, surged and sewn to the sleeve piece with 3-thread over lock. The cuff shall finish no more than 2-inches wide.

EPULETS

There shall be an epaulet on each shoulder. The epaulet shall measure 1 ½-inches wide and shall be of the same fabric as the shell fabric. The epaulet shall be folded and edge stitched 1/16-inch gauge. The end of each epaulet shall be sewn (o/c) in the top shoulder seam between the body and sleeve seams. The epaulets shall extend 5 ½-inches from the top shoulder seam toward the collar and straddle the front and back panel shoulder seam. There shall be a single needle top stitch that secures the epaulet to the shoulder. The stitching shall form a 2 x 2-inch, "boxed-X" design that originates at the top shoulder seam. The epaulet shall finish in a pointed shape. The point of origin for the grand epaulet finish point shall be 4 ½-inches from the shoulder seam. The finish point shall be secured to the shoulder seam via a button. There shall be a 3/8-inch buttonhole ¼-inch from the finish point on the epaulet and a button sewn to the shoulder seam.

There shall be a microphone epaulet in the placket. The epaulet shall measure ½-inch wide and shall be of the same fabric as the shirt shell fabric. The epaulet shall be folded and edge stitched 1/16-inch gauge. The ends of the epaulet shall be set above the placket assembly in between the placket seam and box seam. The epaulet shall be set no more than ¼-inch above the bottom of the box seam.

HEM

The hem shall be of a split tail design. The hem shall be vented at the sides. The side vent shall extend 2-inches up from the front hem finished edge and shall be bar tacked where it intersects at the side seam. The hem shall be 3-thread edge stitched folded ¾-inch and double needle top stitched ¼-inch gauge. The hem shall be 2-inches longer in

BUTTONS

The buttons shall be first grade 24 ligne melamine and have two thread holes. The buttons shall be dyed to match the shirt shell fabric color.

SEAMS AND STITCHING

All stitching shall be lock stitch type 301. All exposed exterior seams, excluding under sleeve and side seam shall be topstitched ¼-inch gauge.

THREAD

All construction thread shall be minimum size Tex 30 or 50/2. All top stitch thread shall be minimum size Tex 40 or 30/2.

SIZES

The Velocity Long Sleeve Polo Shirt shall be available in the following sizes: Xs-6X.

LABELS

Manufacture and size labels shall be sewn onto the binding tape in the center of the back collar. Care instructions, manufacture's identification and R/N # shall be sewn into the left side seam of the lower body.

ADDITIONAL OPTIONS – SFMTA-ENFORCEMENT

1. SFMTA-ENFORCEMENT logo screened in white ink on the left front chest.
2. No shoulder epaulettes.

**SPECIFICATIONS
SFMTA ENFORCEMENT
BIKE HELMET
ITEM 23, 23A**

ITEM 23 **Bell (Rounded back)**
Size: S-L
120488, Model Citi

ITEM 23A **Bell (Rounded back)**
Size: XL-up
XLV2019853

Or acceptable like alternate.

Bell Citi Helmet Technical Specification	
HELMET TYPE	<ul style="list-style-type: none"> • Bicycle Racing / Casual Riding
EXTERIOR SHELL	<ul style="list-style-type: none"> • Fusion In-Mold Microshell
VENTILATION SYSTEM	<ul style="list-style-type: none"> • 16 Vents
PURPOSES	<ul style="list-style-type: none"> • Bicycle Racing / Casual Bicycle Riding
WEIGHT	<ul style="list-style-type: none"> • 11 oz; 312 grams
SIZES	<ul style="list-style-type: none"> • Universal Adult: 54-61 cm; 21.25" - 24"
FEATURES	<ul style="list-style-type: none"> • ErgoDial Fit System • Blade Visor • Cam-Lock Levers • Channeled Ventilation
OPTIONAL	<ul style="list-style-type: none"> • Flip Mirror
SAFETY STANDARDS	<ul style="list-style-type: none"> • CPSC Certified

SPECIFICATIONS – JULY 2010

SFMTA ENFORCEMENT 5.11 5 in 1 JACKET ITEM 24

Style Number 48017

FABRIC TYPE:

Outer Jacket/Coat: Shell is 100% Nylon; Fleece Jacket; Shell is 100% Polyester Fleece

FEATURES AND BENEFITS:

The 5-in-1 Parka features the 100% Nylon FD which delivers an exceptional warmth and waterproof-breathable versatility. The 100% Polyester Tafetta offers a breathable lining. The 100% Polyester Fleece Jacket is wind resistant and offers great comfort to your body and warmth.

Water Resistant: Waterproof treated fabrics with especially designed zippers, closures and seams completely seal out water and rain.

Outer Pockets: 11 – Space for hand warming and storage.

Back-up Belt System rounds out this great parka and offers ability to carry additional gear. The jacket is made of abrasion resistant lower lining on coat and shoulder, elbows and lower inside lining of fleece jacket. The 5-in-1 includes an ANSI/ISEA 2007-2006 (Category II) High-Vis Traffic Best.

STITCHING AND FINISHING:

Fully seam sealed shell, over locked seams with single needle details stitching, to reinforce seams and pocket corners.

CLOSURES:

YKK zippers, VELCRO Hook and Loop

PRYM Snap – plastic cap snap

LABELS:

Jackets have a care label, size label, country of origin and fiber content label permanently attached to the garment.

STOCK SIZES:

XS – 4XL

COLOR: Black

SPECIFICATIONS – JULY 2010

SFMTA ENFORCEMENT 5.11 TDU PANT ITEM 25

Style Number 74003-724 Dark Navy TDU Pant

FABRIC AND FINISHING:

Main Body: 65% Polyester, 35% cotton: tear-resistant Ripstop: with HR Teflon water resistant finish.
Pocketing: 70% Polyester 30% Cotton, 3.2 oz, tightly woven poplin

FEATURES AND BENEFITS:

Self adjusting tunnel waist; deep front pockets; large pleated cargo pockets with bellows on sides and 2 compartment pockets with BBS feature inside; back pockets with flaps. The pants have double knees of self-fabric and a double seat of self fabric. Leg openings have removable draw cords.

DESIGN DETAILS

Pockets: Front pocket openings have self fabric facings and extra reinforcement on knife clipping area. Pocket openings and side seam intersections are firmly back tacked. Pocket bags are made of durable Poly/Cotton blend and they are extra deep. Pocket bags are finished clean inside the pant and double stitched for heavy duty. Cargo pockets have large flaps and Velcro closure that is designed to reach even when pockets are full. Divided pockets inside have double function: small items fit inside and several types of rigs attach to Velcro loop fabric on the face side. Pleats and bellows camouflage the exact nature of the items on the rigs. Back pockets have single welts and generous size flaps with two Velcro closure on both sides. Pocket bags are deep, clean finished inside and double stitched.

SEAMS AND STITCHINGS:

Seams are durable with 10 stitches per inch and extra heavy 5-thread construction. Top Stitchings are non-raveling lock stitchings. Side seams, seat seam and front rise have tree-needle top stitching. Crotch point is bar tacked. Fly outline, hand pocket openings, all pocket flaps, knee patches and seat patch have double needle top stitchings. Cargo pockets are attached with double needle top stitching. Belt loops are bar tacked on all corners. Cargo pocket openings are bar tacked and flaps are cross bar tacked. Back pocket openings are bar tacked. All Velcro pieces are attached with box stitching. Hem draw cord is tacked to inseam so that it will not slip out; the tack is removable.

LABELS:

The woven logo label, care label, size label, country of origin label and fiber content label are permanently attached to the pants.

CLOSURES:

Closures are high quality, proven brand name products. Fly zipper is metallic YKK zipper with auto lock slider. Waist snap is metallic PRYM snaps with extra strong grip. Inside fly button is non-burning, non-melting, non-cracking Melamine button, and it is cross tacked.

SIZES:

XS 23 ½" – 27"

S 27 ½" - 31"
M 31 ½" - 35"
L 35 ½" - 39"
XL 39 ½" - 43"
2XL 43 ½" - 47"
3XL 47 ½" - 51"
4XL 51 ½" - 55"
5XL 55 ½" - 59"
6XL 59 ½" - 63"

Inseams; Short 29 ½"
Regular 32 ½"
Long 35 ½"
XLong 38 ½"

SFMTA ENFORMENT
ATAC 8" BOOT

ITEM 26

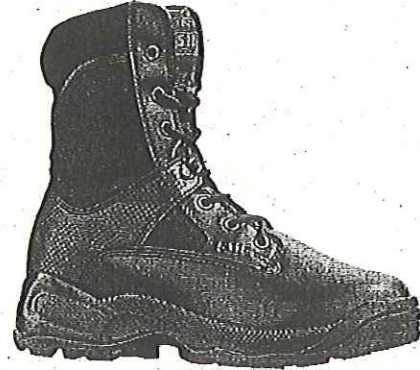
ATAC 8" BOOT STYLE # 12004, OR acceptable like alternate.

PRODUCT DESCRIPTION ATAC Storm 8" Boot

STYLE NO. 12004



**SHOCK
MITIGATION
SYSTEM™**



FABRIC TYPE

- Full grain water proof leather
- Waterproof/breathable
- 1200 Denier Nylon
- Ankle stabilizer and speed hook to lace tighter at the ankle
- Suede padded collar
- Inside YKK zipper for easy on and off

UPPERFEATURES & BENEFITS

- Polished leather toe
- Waterproof/Breathable membrane
- Water proof full grain Leather and nylon upper
- Antibacterial and moisture-wicking lining
- Shock Mitigation System™
- Hidden knife pocket
- Non metallic shank
- Semi-rigid heel and toe reinforcement
- YKK Side Zipper
- Available in wide widths

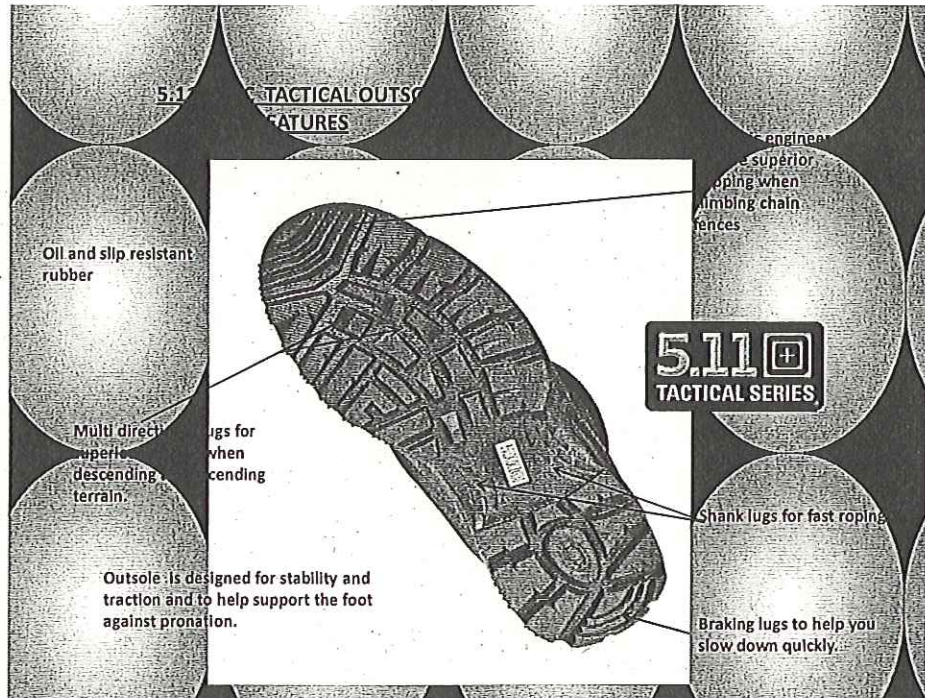
OUTSOLE DETAILS

Rubber outsole for slip and oil resistance/ Quiet outsole non squeaking
Injected midsole for flexibility,
SEE BELOW FOR OUTSOLE DESIGN DETAILS

Design Description

The 5.11 ATAC 8" Storm Boot is a perfect day to day patrol boot. The YKK® side zipper allows you to quickly get into and out of your duty boot. Once you've tied the boots up, you'll just have to activate the zipper and you are good to go. These boots come with an antibacterial and moisture-wicking lining which will keep your feet comfortable and dry. Designed to be fast, lightweight and responsive the ATAC 8" Storm incorporates cutting-edge design features, traditional construction processes for proven durability and a great value. Every boot in our line includes our trademark Shock Mitigation System™ which

combines construction components to offer you the ultimate in support for high impact activity.



LABELS	INSIDE TONGUE LABEL WITH NAME OF SHOE, STYLE NUMBER, PO NUMBER CONTENT AND COUNTRY OF ORIGIN
CLOSURES	Round laces, eyelets and speed hook YKK side zipper
STOCK SIZES	MEDIUM : SIZES 4,5,6-12(WHOLE AND HALF SIZES), 13,14,15 WIDES: 7-12(WHOLE AND HALF SIZES),13
C O L O R S	BLACK